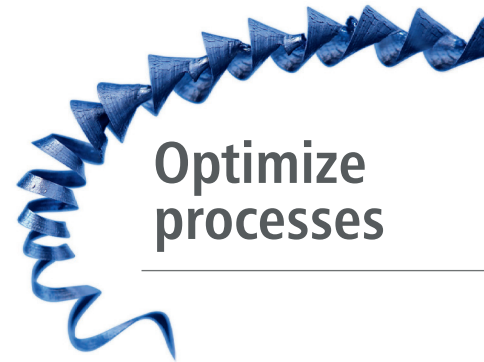




Büchele
SF-Systeme

Chip conveyor · high-pressure units · Filter systems · Coolers



Optimize
processes



COMPANY



For more than twenty years, we have been designing, manufacturing and optimising highpressure, filtration and chip conveyor. We are your partner for efficient, energy saving solutions. For SF-Systeme Büchele, customer satisfaction is the ultimate goal, and customised solutions are part of what we do. In order to offer our customers the best possible production solutions, we continuously optimise our existing models and develop new, flexible and future-proof machines that meet their needs.

Contents

| | | |
|----|--|--|
| 4 | SFB-100 SMART _____ | high pressure unit |
| 6 | SFB-200 _____ | high pressure unit |
| 8 | SFB-201 _____ | high pressure unit |
| 10 | SFB-300 <i>eco</i> _____ | high pressure unit |
| 12 | SFB-300 <i>eco/small</i> _____ | high pressure unit |
| 14 | SFB-301 <i>eco</i> _____ | high pressure unit |
| 16 | SFB-310 <i>eco</i> _____ | high pressure unit+loading magazine |
| 18 | SFB-M60 <i>eco</i> with belt filter _____ | high pressure unit |
| 20 | SFB-M60 <i>eco</i> with automatic filter _____ | high pressure unit |
| 22 | SFB-M60 <i>eco</i> with changeover and automatic filter _____ | high pressure unit |
| 24 | SFB-M60 TWIN <i>eco</i> _____ | high pressure unit |
| 26 | SFB-600 COMFORT <i>eco</i> _____ | high pressure unit with belt filter/ automatic filter system |
| 28 | SFB-700 <i>eco</i> _____ | high pressure unit with chip conveyor |
| 30 | Chip conveyor with separator | |
| 32 | Chip conveyor with rotating scraper system | |
| 34 | Chip conveyor | |

SFB-100 SMART

Technical data

| Max. performance | Filtration | Pressure setting | Dimensions (LxWxH) |
|-------------------|------------|------------------|--------------------|
| 65 bar / 9 l/min | 40 µm | 10 - 65 bar | 650 x 445 x 720 mm |
| 65 bar / 20 l/min | 40 µm | 10 - 65 bar | 650 x 445 x 720 mm |

Suitable for machine tools, short and long lathes

Options:

- up to 4x valve switching
- Customised units
- Double changeover filter (unit without panelling)

Dimensions (LxWxH)

750 x 470 x 1000 mm



SFB-100 SMART

Entry-level machine

Compact, flexible and easy to use. Thanks to its compact design and userfriendliness, the **SFB-100 SMART** is the perfect entry-level unit for use in conjunction with various machine tools. It now comes with a fully enclosed housing and looks good beside any machining unit. The colour LEDs indicate the operating status.



Dimensions (LxWxH)

870 x 380 x 550 mm

Mountable under the
loading magazine!



SFB-200 high-pressure unit

Technical data

| Max. performance | Filtration | Tank capacity | Pressure range | Dimensions in mm (LxWxH) |
|--------------------|------------|---------------|----------------|--------------------------|
| 65 bar / 9 l/min | 40 µm | 200 l | 10 - 65 bar | 1500 x 500 x 1000 mm |
| 65 bar / 20 l/min | 40 µm | 200 l | 10 - 65 bar | 1500 x 500 x 1000 mm |
| 80 bar / 20 l/min | 40 µm | 200 l | 10 - 80 bar | 1500 x 500 x 1000 mm |
| 100 bar / 20 l/min | 40 µm | 200 l | 10 - 100 bar | 1500 x 500 x 1000 mm |
| 200 bar / 9 l/min | 25 µm | 200 l | 100 - 200 bar | 1500 x 500 x 1000 mm |
| 330 bar / 5 l/min | 10 µm | 200 l | 200 - 300 bar | 1500 x 500 x 1000 mm |

Suitable for machine tools, short and long lathes.

Options:

- Double changeover filter
- 2x to 8x valve switching
- 10 µm filter for deep hole drilling
- Customised units

SFB-200

Exceptional performance

The **SFB-200 STANDARD** comes with a low-maintenance high-pressure pump producing up to 330 bar and can supply up to 8 machining stations of the machine tool.



SFB-201 high-pressure unit

Technical data

| max. performance | Filtration | Tank capacity | Dimensions (LxWxH) | Compatible Loading magazines |
|--------------------|------------|---------------|---------------------|--|
| 65 bar / 20 l/min | 40 µm | 200 l | 1475 x 700 x 730 mm | minimag, micromag, turbo 2-20 / 3-26 / 3 -36, LSK 38 |
| 100 bar / 20 l/min | 40 µm | 200 l | 1475 x 700 x 730 mm | minimag, micromag, turbo 2-20 / 3-26 / 3 -36, LSK 38 |
| 200 bar / 9 l/min | 20 µm | 200 l | 1475 x 700 x 730 mm | minimag, micromag, turbo 2-20 / 3-26 / 3 -36, LSK 38 |

Suitable for machine tools, short and long lathes.

All machines come with a touch screen display.

Options:

- up to 8x valve switching
- 10 µm filter for deep hole drilling
- Customised units

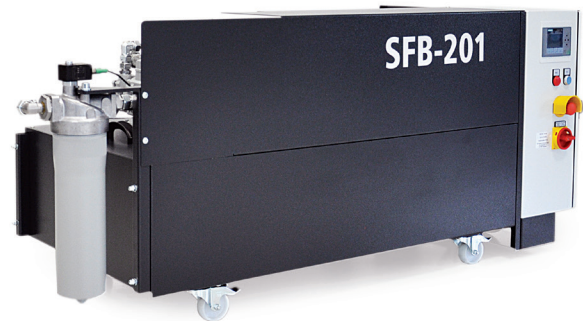
The **SFB-201** is available in various versions, depending on:

- Rod length (from 3200 mm)
- Delivery also for magazines with shifting unit

SFB-201

The cost effective -
space save - can be installed directly under the loading magazine

The **SFB-201** comes with a low-maintenance high-pressure pump producing up to 200 bar and can supply up to 8 machining stations of the machine tool.



SFB-300 **eco** high-pressure unit

Technical data

| Max. performance | Filtration | Tank capacity | Continuous adjustment | Dimensions (LxWxH) |
|--------------------|------------|---------------|--------------------------------|----------------------|
| 100 bar / 20 l/min | 40 µm | 200 l | Display with 4 pressure levels | 1600 x 500 x 1000 mm |
| 150 bar / 20 l/min | 40 µm | 200 l | Display with 4 pressure levels | 1600 x 500 x 1000 mm |

Suitable for machine tools, short and long lathes

Options:

- Double changeover filter
- up to 8x valve switching
- 10 µm filter for deep hole drilling
- Customised units

SFB-300 *eco*

Automatic pressure and volumetric flow control

The **SFB-300 *eco*** was developed with energy efficiency in mind. Thanks to the continuous control of the volumetric flow, the machine runs at all times within its optimum efficiency range.

At the control display, the pressure can be set to 4 pressure levels, which can then be applied at the machine tool by means of memory commands. The high pressure can be made available to up to 8 machining stations.



SFB-300 *eco/small* high-pressure unit

Technical data

| Max. performance | Filtration | Tank capacity | Continuous adjustment | Dimensions (LxWxH) |
|--------------------|------------|---------------|--------------------------------|---------------------|
| 100 bar / 20 l/min | 40 μ m | 170 l | Display with 4 pressure levels | 1270 x 500 x 830 mm |
| 150 bar / 20 l/min | 40 μ m | 170 l | Display with 4 pressure levels | 1270 x 500 x 830 mm |

Suitable for machine tools, short and long lathes

Options:

- Double changeover filter
- up to 4x valve switching
- 10 μ m filter for deep hole drilling
- Customised units

SFB-300 *eco/small*

Automatic pressure and volumetric flow control

The **SFB-300 *eco/small*** was developed with energy efficiency in mind. Thanks to the continuous control of the volumetric flow, the machine runs at all times within its optimum efficiency range.

At the control display, the pressure can be set to 4 pressure levels, which can then be applied at the machine tool by means of memory commands. The high pressure can be made available up to 4 machining stations.

This high-pressure unit also fits in very small space, such as between the loading magazine and the tooling machines.



SFB-301 **eco** high-pressure unit

Technical data

| Max. performance | Filtration | Tank capacity | Dimensions (LxWxH) | Compatible loading magazines |
|--------------------|------------|---------------|---------------------|---|
| 100 bar / 28 l/min | 40 µm | 200 l | 1475 x 700 x 730 mm | minimag, micromag, turbo 2-20 / 3-26 / 3-36, LSK 38 |
| 150 bar / 24 l/min | 40 µm | 200 l | 1475 x 700 x 730 mm | minimag, micromag, turbo 2-20 / 3-26 / 3-36, LSK 38 |
| 100 bar / 28 l/min | 40 µm | 200 l | 1875 x 700 x 730 mm | turbo 5-55, turbo 5-65 |
| 150 bar / 24 l/min | 40 µm | 200 l | 1875 x 700 x 730 mm | turbo 5-55, turbo 5-65 |

All machines come with a touch screen display.

Suitable for machine tools, short and long lathes

Options:

- up to 8x valve switching
- 10 µm filter for deep hole drilling
- Customised units

The **SFB-301 eco** is available in various versions, depending on:

- Loading magazine tank (integrated / not integrated)
- Rod length (from 3200 mm)

SFB-301^{eco}

Energy-efficient compact system for installation directly below loading magazine

SFB-301^{eco} - innovative solution of unique design! The machine and the loading magazine form a compact unit. This machine incorporates 20 years of expertise in the field. Its design and functions were fine-tuned and optimised by our CAD developer team. The SFB-300 eco combines tried and tested components with exceptionally high (100 bar 28 l, 150 bar 24 l). The high pressure can be made available up to 8 machining stations.



SFB-310 **eco** high-pressure unit

Technical data

| Max. performance | Filtration | Tank capacity | Compatible loading magazines |
|--------------------|------------|---------------|------------------------------|
| 100 bar / 28 l/min | 40 μ m | 200 l | turbo 3-26 / 3-36 |
| 150 bar / 24 l/min | 40 μ m | 200 l | turbo 3-26 / 3-36 |

Suitable for machine tools, short and long lathes

Options:

- up to 8x valve switching
- 10 μ m filter for deep hole drilling

loading magazine + high pressure = Innovation

FMB



NEW!

SFB-310_{eco}

The high pressure unit in the FMB magazine
high-pressure powered by SF-Systeme-Bücheler

SFB-M60 *eco* high-pressure unit

Technical data

| Pressure | Vol. high pressure | Tank capacity | Filter system | Dimensions (LxWxH) |
|----------|--------------------|---------------|---------------|----------------------|
| 80 bar | 42 l/min | 280 l | Belt filter | 1660 x 612 x 1500 mm |
| 100 bar | 35 l/min | | | |
| 100 bar | 28 l/min | | | |
| 150 bar | 24 l/min | | | |

Suitable for machine tools, short, long and multiple-spindle lathes

Options:

- up to 8x valve switching
- 10 μ m filter for deep hole drilling
- Cooling
- Heating
- Customised units

SFB-M60 **eco** high-pressure unit with Belt filter system

Modular system with Bypass filtration

The new **SFB-M60 eco** is a modular system that stands for flexibility in production. The energy-efficient high-pressure units are individually configured to meet the requirements of the connected machine tools.

The **SFB-M60 eco** is able to supply up to 8 machining stations with high pressure.

The high pressure can be preselected by 8 freely adjustable pressure levels.

By means of the permanently operating bypass filtration, the complete coolant of the machine tool is cleaned in the secondary flow. As a result, the tool life increases and the cleaning time intervals of the machine tank are reduced.



with Belt filter system

SFB-M60 *eco* high-pressure unit

Technical data

| Pressure | Vol. high pressure | Tank capacity | Filter system | Dimensions (LxWxH) |
|----------|--------------------|---------------|------------------|----------------------|
| 80 bar | 42 l/min | 280 l | Automatic filter | 1660 x 612 x 1500 mm |
| 100 bar | 35 l/min | | | |
| 100 bar | 28 l/min | | | |
| 150 bar | 24 l/min | | | |

Suitable for machine tools, short, long and multiple-spindle lathes

Options:

- up to 8x valve switching
- 10 μ m filter for deep hole drilling
- Cooling
- Heating
- Customised units

SFB-M60 *eco* high-pressure unit with Automatic filter

Modular system with Bypass filtration

The new **SFB-M60 *eco*** is a modular system that stands for flexibility in production. The energy-efficient high-pressure units are individually configured to meet the requirements of the connected machine tools. The **SFB-M60 *eco*** is able to supply up to 8 machining stations with high pressure.

The high pressure can be preselected by 8 freely adjustable pressure levels.

By means of the permanently operating bypass filtration, the complete coolant of the machine tool is cleaned in the secondary flow. As a result, the tool life increases and the cleaning time intervals of the machine tank are reduced.

with Automatic filter system



SFB-M60 *eco* high-pressure unit

Technical data

| Pressure | Vol. high pressure | Tank capacity | Filter systems | Dimensions (LxWxH) |
|----------|--------------------|---------------|----------------------------|----------------------|
| 100 bar | 28 l/min | 280 l | - Changeover filter | 1660 x 612 x 1500 mm |
| 150 bar | 24 l/min | | - Double changeover filter | |
| 200 bar | 9 l/min | | | |

Suitable for machine tools, short, long and multiple-spindle lathes

Options:

- up to 8x valve switching
- 10 μ m filter for deep hole drilling
- Cooling
- Heating
- Customised units

SFB-M60 *eco* high-pressure unit with Changeover and Double changeover system

Modular system

The new **SFB-M60 *eco*** is a modular system that stands for flexibility in production. The energy-efficient high-pressure units are individually configured to meet the requirements of the connected machine tools.

The **SFB-M60 *eco*** is able to supply up to 8 machining station with high pressure. The high pressure can be preselected by 8 freely adjustable pressure levels.



with Changeover and Double changeover system

SFB-M60 TWIN *eco* high-pressure unit

Technical data

| Pump 1 | | Pump 2 | | Tank capacity | Filter systems | Dimensions (LxWxH) |
|---------------|---------------|---------------|---------------|---------------|--|----------------------|
| Pressure | Vol. pressure | Pressure | Vol. pressure | | | |
| up to 150 bar | max. 42 l/min | up to 200 bar | max. 28 l/min | 370 l | - Changeover filters - Double changeover filters - Automatic filters - Belt filters | 2060 x 612 x 1700 mm |

Suitable for machine tools, short, long and multiple-spindle lathes

Options:

- up to 16x valve switching
- 10 µm filter for deep hole drilling
- Cooling
- Heating
- Customised units

SFB-M60 TWIN *eco* high-pressure unit

Modular system

„Improved performance means greater efficiency“ – boost the high-pressure supply to your machine tools by investing in a **SFB-M60 TWIN *eco*** high-pressure unit. Two independently and parallel run high-pressure pumps supply up to 16 machining stations. On request, the various modules such as the filter systems and the pumps can be customised to suit the customer's requirements.

By means of the permanently operating bypass filtration, the complete coolant of the machine tool is cleaned in the secondary flow. As a result, the tool life increases and the cleaning time intervals of the machine tank are reduced.

According to customer requirements, the most diverse filter systems and pumps are adapted to the operational requirements.

with Belt filter system



SFB-600^{eco} high-pressure unit

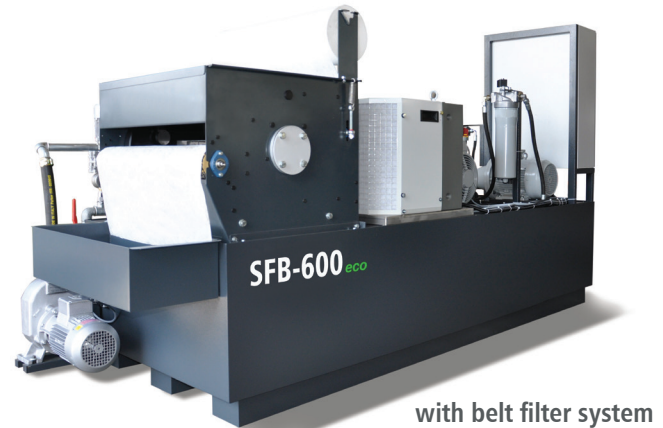
Technical data

| Pressure | Vol. high pressure | Filtration | Tank capacity | Filter systems | Max. performance |
|---------------|--------------------|-----------------|---------------|---------------------------------------|------------------|
| up to 330 bar | max. 100 l/min | 10 - 40 μ m | 400 - 1000 l | - Automatic filters - Belt filters | up to 300 l/min |

Suitable for machine tools, short, long and multiple-spindle lathes

Options:

- Pressure monitoring system
- Double changeover filter
- up to 8x valve switching
- 10 μ m filter for deep hole drilling
- Customised units
- Cooling
- Heating



with belt filter system

SFB-600 *eco* high-pressure unit

Universal filter system

The **SFB-600 *eco*** caters for the filtration of very high volumetric flows. Depending on the type of chips to be removed, it highly effective full flow filtration system is equipped with an automatic backwashfilter or a belt filter. Integrated cooling/heating guarantees a constant medium temperature optimised for energy efficiency. Full flow filtration allows for best possible surface finish on turned parts, as it guarantees that the low and high pressure pumps are constantly supplied with purified medium.

with Automatic filter system



SFB-700^{eco} slat band conveyor with high pressure

Technical data

| Pressure | Vol. high pressure | Filtration | Tank capacity | Filter systems |
|---------------|--------------------|-----------------|---------------|---|
| up to 330 bar | max. 42 l/min | 10 - 40 μ m | 200 - 800 l | - Changeover filter - Double changeover filter - Automatic backwash filter - Belt filter |

Suitable for machine tools, short and long lathes

Options:

- Pressure monitoring system
- Double changeover filter
- up to 8x valve switching
- 10 μ m filter for deep hole drilling
- Customised units



SFB-700 *eco* slat band conveyor with high pressure

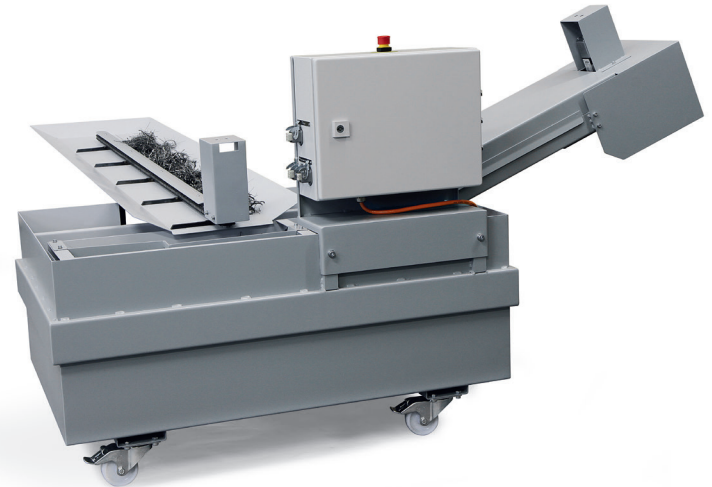
The **SFB-700 *eco*** is a compact unit packed with innovation and efficiency. Combining a chip conveyor and a high-pressure unit, this machine allows for maximum process automation.



Chip conveyor

With separator

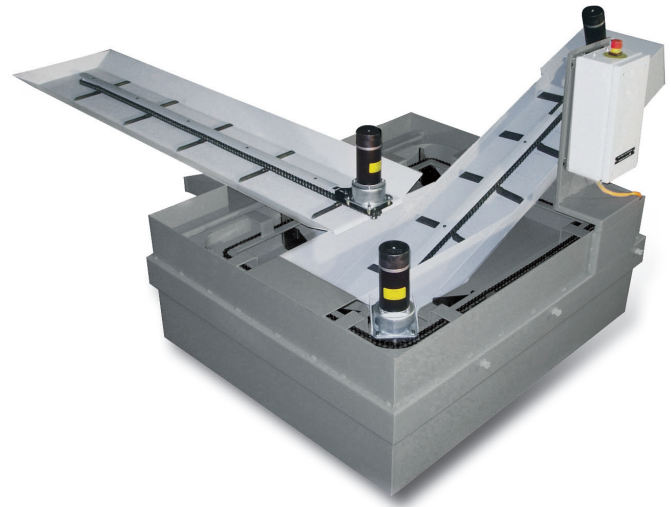
The innovative principle behind this chip conveyor demonstrates how the efficiency of a machine tool can be enhanced. The coolant and solids are transferred through a flush tray or a chip conveyor away from the machine into the collection tank. The baffle and screen sheet inserts remove all large chips and solids from the coolant.



Chip conveyor

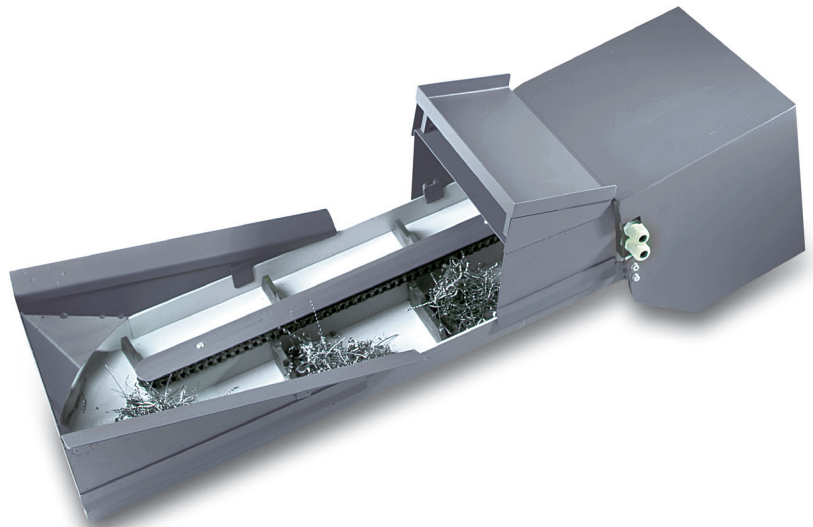
With rotating scraper system

A chip conveyor unit fitted with a rotating scraper system must be able to remove even minute chips from the coolant by means of the integrated 1mm-perforated plate. The chips and particles are then transferred by the chip conveyor out of the oil collection vessel. The cleaned coolant is returned through a return line to the machine.



Chip conveyor

Our product range includes chip conveyor that continuously remove chips from the machining area, doing away with time-consuming manual cleaning. They thus minimise standstills caused by chip overload and increase the productivity of your machine.



Notes:

Notes:

Notes:



Im Hinteracker 14
D-76307 Karlsbad
Fon +49 (0) 72 48 926 44 0
Fax +49 (0) 72 48 926 44 25
info@sf-systeme.de
www.sf-systeme.de

